



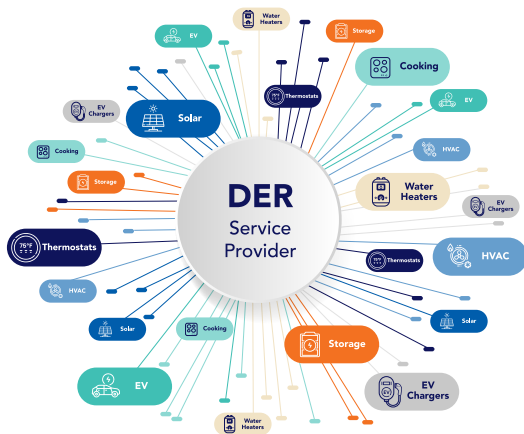
## Derapi: One API uniting the Distributed Energy ecosystem

### Accelerating time to market for DER software developers through one fast and simple integration to access an ecosystem of DER devices

The DER landscape is changing rapidly, with deployments of rooftop solar, battery storage, electric vehicles, and heat pumps growing faster than ever. For DER software developers creating innovative solutions for DERs, this means a tangled mess of unique data integrations that creates a barrier to scale.

#### Industry Challenge:

Building and maintaining data connections to DERs is complex, slow, and costly.

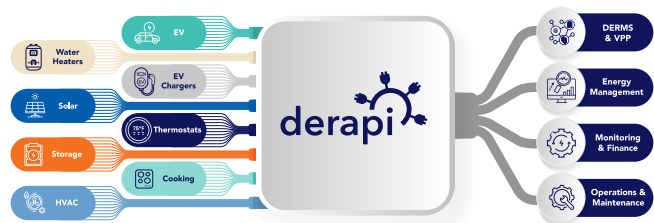


#### Derapi untangles the mess!

We offer a single API integration point that simplifies and secures access to devices from any supported manufacturer. This makes it easier and faster for our customers to enter the market and achieve scale.

#### The Derapi Solution:

A uniform, managed API layer.



#### Derapi accelerates your time to market by providing:

**Simplicity:** Unlike bespoke integrations done in-house, Derapi's single point of integration

- Gives immediate access to any supported device
- Eliminates maintenance cost & effort
- Frees technical resources to develop value-added features

**Security & Reliability:** Derapi prioritizes manufacturer-sanctioned APIs and data access methods – providing secure, reliable access

**Flexibility & Scale:** Subscription-based pricing models allow you to pay only for the manufacturers, devices, and feature sets you need



#### Book a Free Consultation with a DER Expert

Simplify your data integrations with Derapi. Scan the QR code or go to [derapi.com/contact](https://derapi.com/contact) to discover how we can help you speed time to market, reduce costs, and focus resources on your core business.